

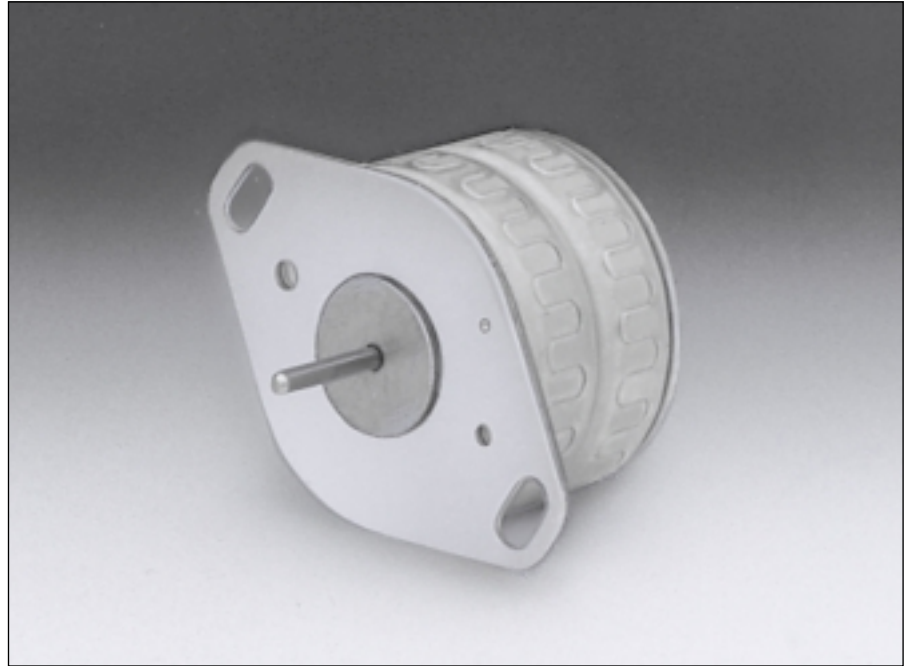
## 6155

**Angle de pas**  
**Schrittwinkel**  
**Step angle** 18 °

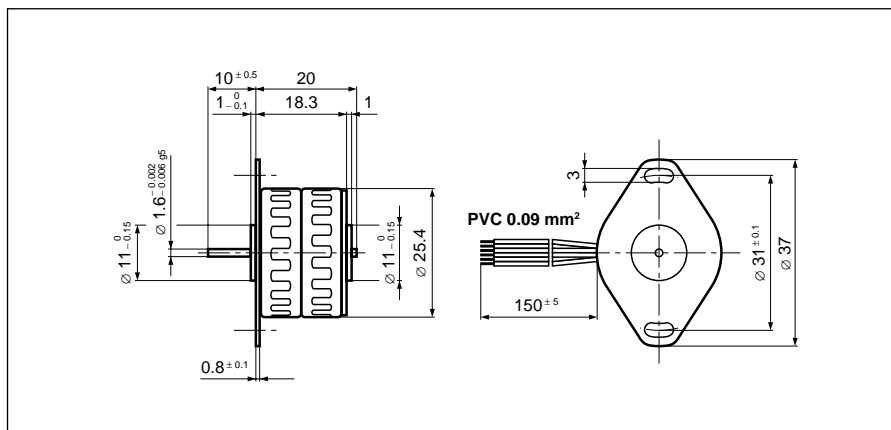
**Diamètre**  
**Durchmesser**  
**Diameter** 25.4 mm

**Poids**  
**Gewicht**  
**Weight** 36 g

**Couple de retenue**  
**Haltemoment**  
**Holding torque** 6.2/4.6 mNm

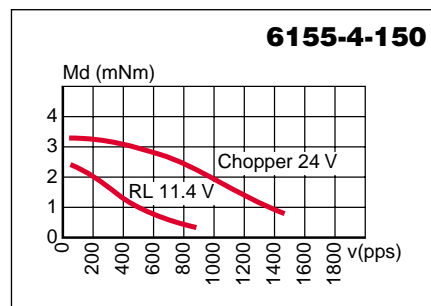
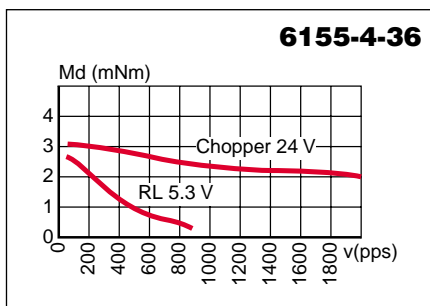
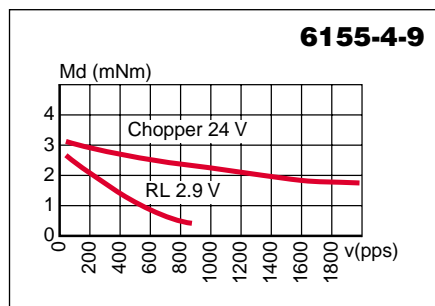
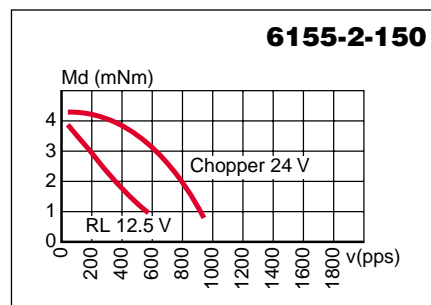
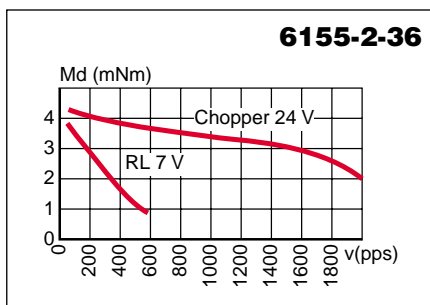
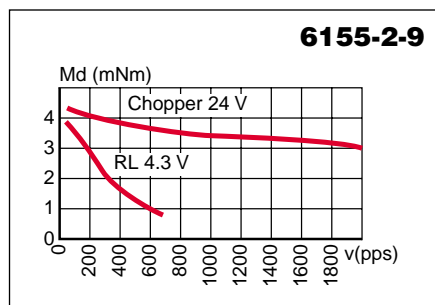


		Résistance de phase Phasenwiderstand Phase resistance $\Omega$	Induct. de phase Phaseninduktivität Phase inductance mH	Courant de phase Phasenstrom Phase current A	Couple de retenue Haltemoment Holding torque mNm	Puissance nominale Nennleistung Nominal power W	Code câble Kabelcode Cable-code	
<b>bipolar</b>	<b>6155-2-9</b>	9	6	0.288	6.2	1.5	rose rosa pink	
	<b>6155-2-36</b>	36	23	0.144	6.2	1.5	rouge rot red	
	<b>6155-2-150</b>	150	102	0.070	6.2	1.5	bleu blau blue	
<b>unipolar</b>	<b>6155-4-9</b>	9	3	0.288	4.6	1.5	rose rosa pink	
	<b>6155-4-36</b>	36	12	0.144	4.6	1.5	rouge rot red	
	<b>6155-4-150</b>	150	48	0.070	4.6	1.5	bleu blau blue	

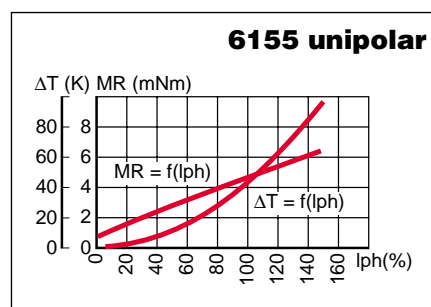
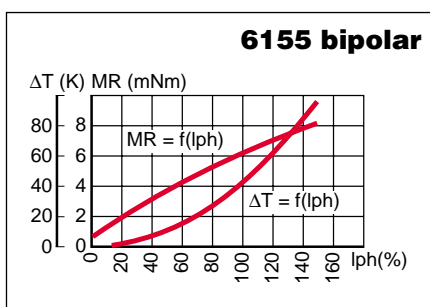


Pas/ Schritte/U Steps/rev	<b>20</b>
Précision/pas Schrittgenauigkeit Step accuracy	<b>± 10 %</b>
Inertie du rotor Rotorträgheitsmoment Rotor inertia	<b>1.1 gcm<sup>2</sup></b>
Classe d'isolation Isolationsklasse Insulation class	<b>E 120 °C</b>
Protection Schutzart Protection	<b>DIN 40050 IP 30</b>
Tension d'essai Prüfspannung Test voltage	<b>500 VAC</b>
Couple résiduel Restmoment Detent torque	<b>0.65 mNm</b>

**Caractéristiques dynamiques**  
**Dynamische Daten**  
**Dynamic characteristics**



**Caractéristiques statiques**  
**Statische Daten**  
**Static characteristics**



Possibilités d'exécutions adaptées sur demande.  
 Auf Wunsch werden kundenspezifische Anforderungen berücksichtigt.  
 Special requirements can be made to customer specification.

**SONCEBOZ SA**  
 CH-2605 Sonceboz  
 Tél: +41 32 488 11 11  
 Fax: +41 32 488 11 00  
 E-Mail: info@sonceboz.com  
 Internet: www.sonceboz.com

