

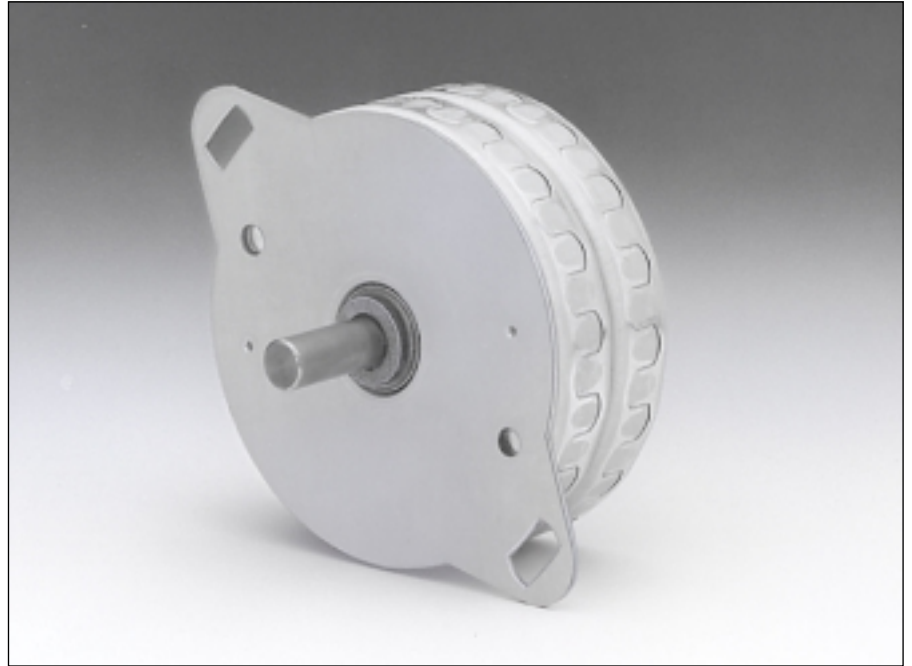
## 6161 S

**Angle de pas**  
**Schrittwinkel**  
**Step angle** 7.5 °

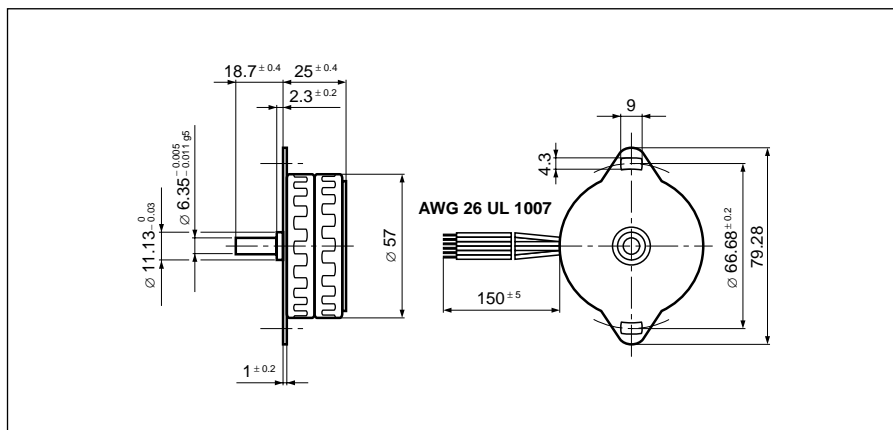
**Diamètre**  
**Durchmesser**  
**Diameter** 57 mm

**Poids**  
**Gewicht**  
**Weight** 275 g

**Couple de retenue**  
**Haltemoment** 120/100 mNm  
**Holding torque**

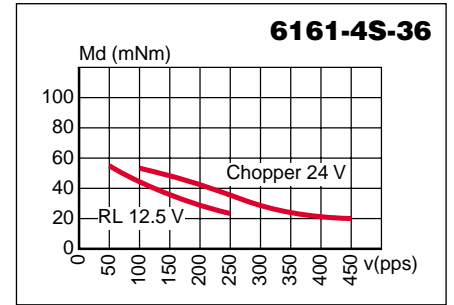
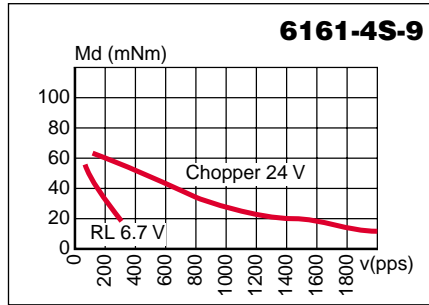
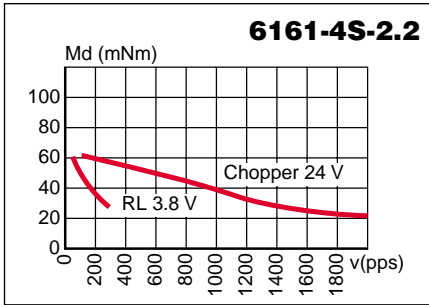
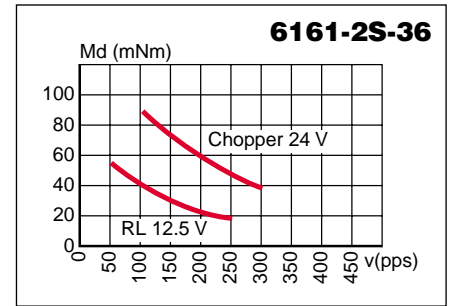
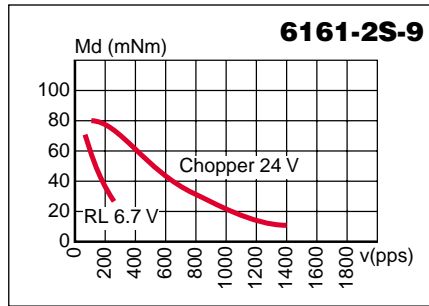
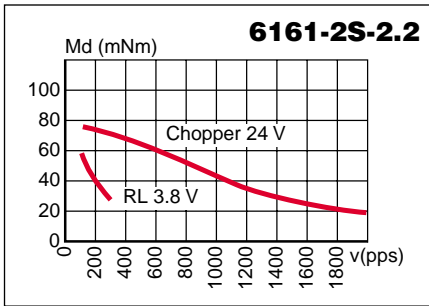


		Résistance de phase Phasenwiderstand Phase resistance $\Omega$	Induct. de phase Phaseninduktivität Phase inductance mH	Courant de phase Phasenstrom Phase current A	Couple de retenue Haltemoment Holding torque mNm	Puissance nominale Nennleistung Nominal power W	Code câble Kabelcode Cable-code	
<b>bipolar</b>	<b>6161-2S-2.2</b>	2.2	3.6	1.37	120	8.3	rose rosa pink	
	<b>6161-2S-9</b>	9	15.0	0.68	120	8.3	rouge rot red	
	<b>6161-2S-36</b>	36	56.0	0.34	120	8.3	bleu blau blue	
<b>unipolar</b>	<b>6161-4S-2.2</b>	2.2	2.0	1.37	100	8.3	rose rosa pink	
	<b>6161-4S-9</b>	9	8.0	0.68	100	8.3	rouge rot red	
	<b>6161-4S-36</b>	36	30.0	0.34	100	8.3	bleu blau blue	

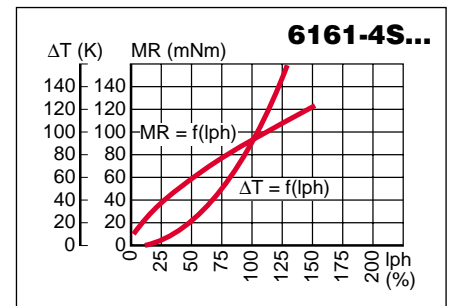
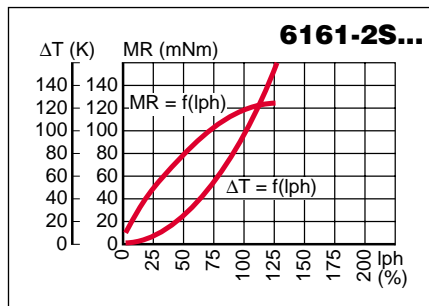


Pas/ Schritte/U Steps/rev	<b>48</b>
Précision/pas Schrittgenauigkeit Step accuracy	<b>± 7 %</b>
Inertie du rotor Rotorträgheitsmoment Rotor inertia	<b>30 gcm<sup>2</sup></b>
Classe d'isolation Isolationsklasse Insulation class	<b>E 120 °C</b>
Protection Schutzart Protection	<b>DIN 40050 IP 30</b>
Tension d'essai Prüfspannung Test voltage	<b>500 VAC</b>
Couple résiduel Restmoment Detent torque	<b>8 mNm</b>

**Caractéristiques dynamiques**  
**Dynamische Daten**  
**Dynamic characteristics**



**Caractéristiques statiques**  
**Statische Daten**  
**Static characteristics**



Possibilités d'exécutions adaptées sur demande.  
 Auf Wunsch werden kundenspezifische Anforderungen berücksichtigt.  
 Special requirements can be made to customer specification.

**SONCEBOZ SA**  
 CH-2605 Sonceboz  
 Tél: +41 32 488 11 11  
 Fax: +41 32 488 11 00  
 E-Mail: info@sonceboz.com  
 Internet: www.sonceboz.com

