

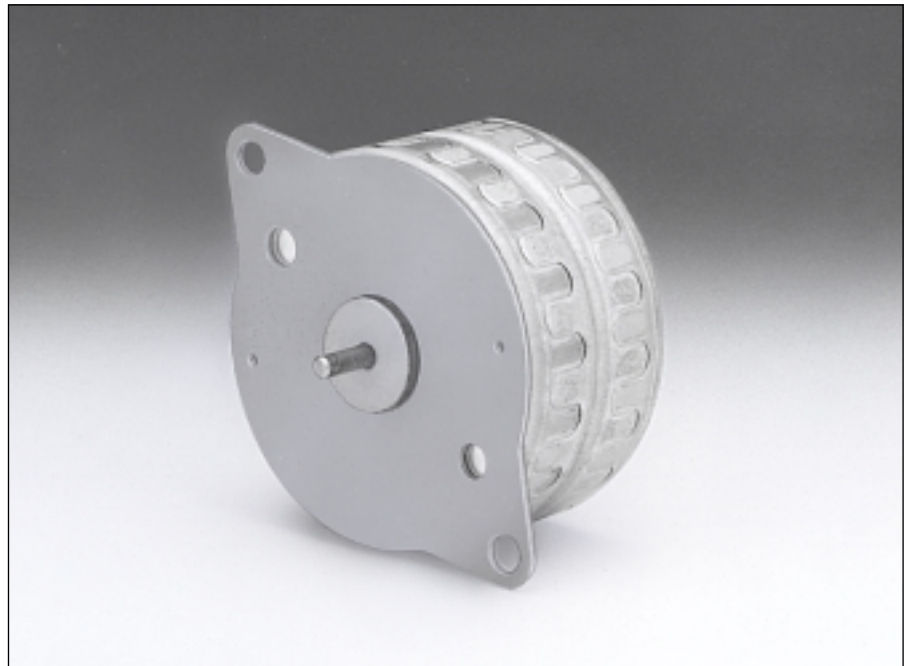
## 6183

**Angle de pas**  
**Schrittwinkel**  
**Step angle** 9°

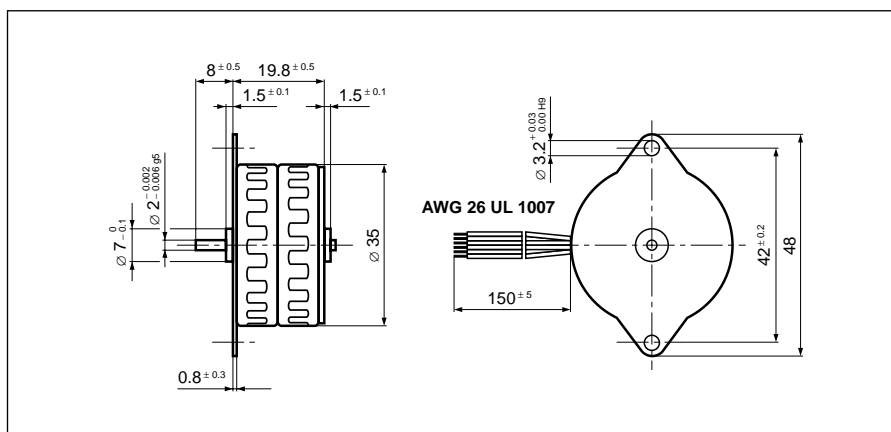
**Diamètre**  
**Durchmesser**  
**Diameter** 35 mm

**Poids**  
**Gewicht**  
**Weight** 75 g

**Couple de retenue**  
**Haltemoment**  
**Holding torque** 16/13 mNm

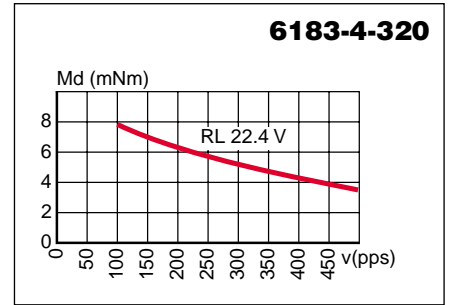
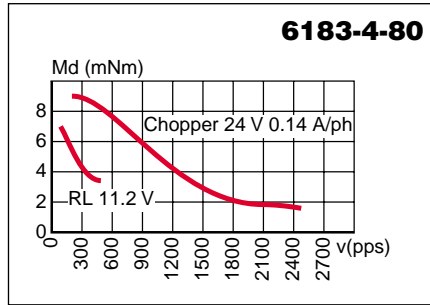
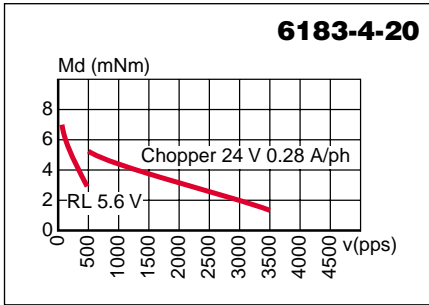
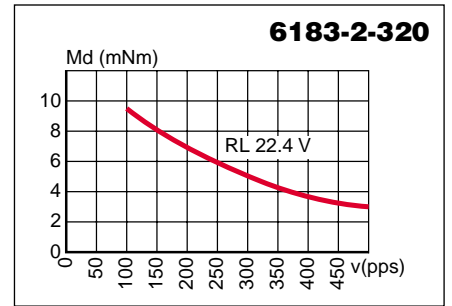
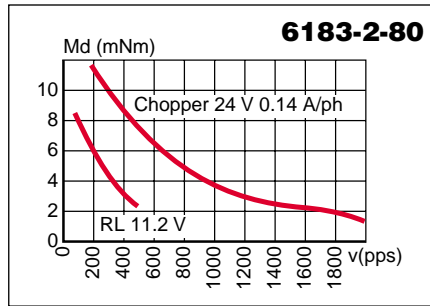
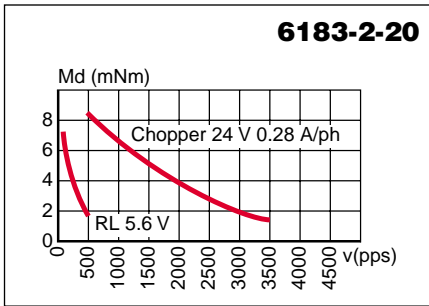


|                 |                   | Résistance de phase<br>Phasenwiderstand<br>Phase resistance<br>$\Omega$ | Induct. de phase<br>Phaseninduktivität<br>Phase inductance<br>mH | Courant de phase<br>Phasenstrom<br>Phase current<br>A | Couple de retenue<br>Haltemoment<br>Holding torque<br>mNm | Puissance nominale<br>Nennleistung<br>Nominal power<br>W | Code câble<br>Kabelcode<br>Cable-code |  |
|-----------------|-------------------|---|--|---|---|--|---------------------------------------|--|
| <b>bipolar</b>  | <b>6183-2-20</b>  | 20  | 24   | 0.28  | 16  | 3.1  | rouge<br>rot<br>red                   |  |
|                 | <b>6183-2-80</b>  | 80  | 96   | 0.14  | 16  | 3.1  | bleu<br>blau<br>blue                  |  |
|                 | <b>6183-2-320</b> | 320   | 380  | 0.07  | 16  | 3.1  | vert<br>grün<br>green                 |  |
| <b>unipolar</b> | <b>6183-4-20</b>  | 20  | 13   | 0.28  | 13  | 3.1  | rouge<br>rot<br>red                   |  |
|                 | <b>6183-4-80</b>  | 80  | 49   | 0.14  | 13  | 3.1  | bleu<br>blau<br>blue                  |  |
|                 | <b>6183-4-320</b> | 320   | 210  | 0.07  | 13  | 3.1  | vert<br>grün<br>green                 |  |

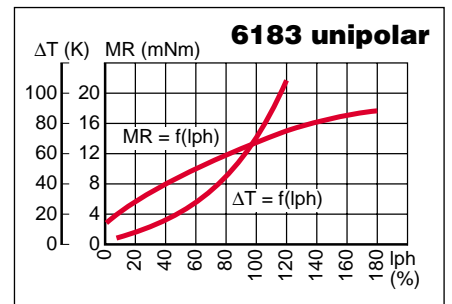
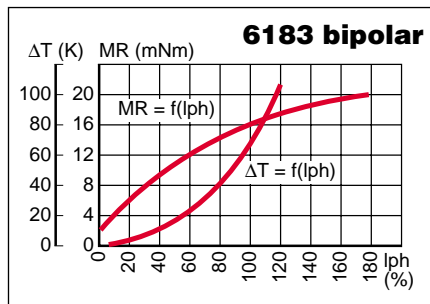


|  |                            |
|--|----------------------------|
| Pas/<br>Schritte/U<br>Steps/rev                            | <b>40</b>                  |
| Précision/pas<br>Schrittgenauigkeit<br>Step accuracy       | <b>± 7 %</b>               |
| Inertie du rotor<br>Rotorträgheitsmoment<br>Rotor inertia  | <b>2.4 gcm<sup>2</sup></b> |
| Classe d'isolation<br>Isolationsklasse<br>Insulation class | <b>E 120 °C</b>            |
| Protection<br>Schutzart<br>Protection                      | <b>DIN 40050<br/>IP 30</b> |
| Tension d'essai<br>Prüfspannung<br>Test voltage            | <b>500 VAC</b>             |
| Couple résiduel<br>Restmoment<br>Detent torque             | <b>1.5 mNm</b>             |

**Caractéristiques dynamiques**  
**Dynamische Daten**  
**Dynamic characteristics**



**Caractéristiques statiques**  
**Statische Daten**  
**Static characteristics**



Possibilités d'exécutions adaptées sur demande.  
 Auf Wunsch werden kundenspezifische Anforderungen berücksichtigt.  
 Special requirements can be made to customer specification.

**SONCEBOZ SA**  
 CH-2605 Sonceboz  
 Tél: +41 32 488 11 11  
 Fax: +41 32 488 11 00  
 E-Mail: info@sonceboz.com  
 Internet: www.sonceboz.com

