

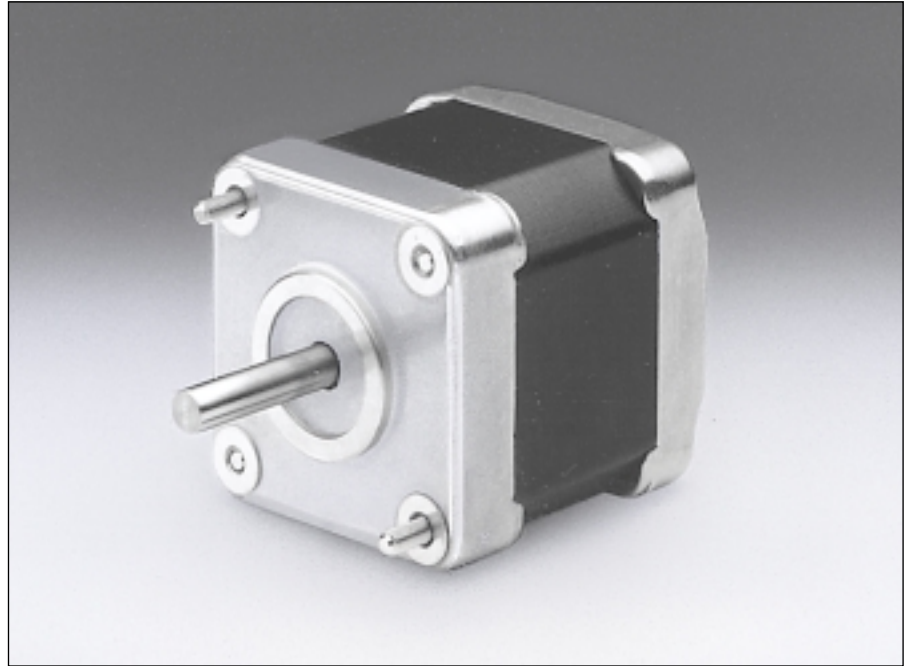
## 6540-18

**Angle de pas  
Schrittwinkel  
Step angle** 1.8 °

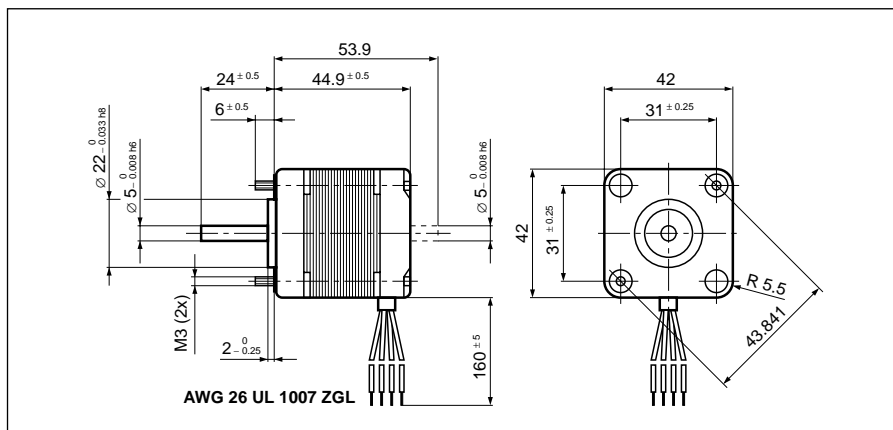
**Diamètre  
Durchmesser  
Diameter** 42 x 42 mm

**Poids  
Gewicht  
Weight** 300 g

**Couple de retenue  
Haltemoment  
Holding torque** 265 mNm

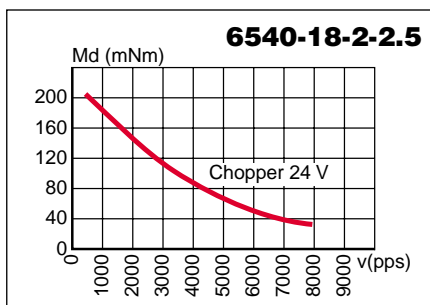
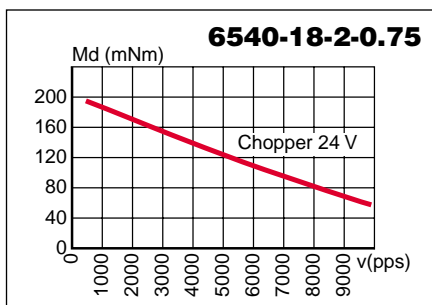


		Résistance de phase Phasenwiderstand Phase resistance $\Omega$	Induct. de phase Phaseninduktivität Phase inductance mH	Courant de phase Phasenstrom Phase current A	Couple de retenue Haltemoment Holding torque mNm	Puissance nominale Nennleistung Nominal power W
<b>bipolar</b>	<b>6540-18-2-0.75</b>	0.75	0.8	2.3	265	8
	<b>6540-18-2-2.5</b>	2.5	3.3	1.25	265	7.8

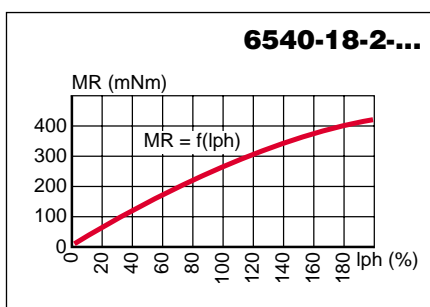


Pas/t Schritte/U Steps/rev	<b>200</b>
Précision/pas Schrittgenauigkeit Step accuracy	<b>± 5 %</b>
Inertie du rotor Rotorträgheitsmoment Rotor inertia	<b>35 gcm<sup>2</sup></b>
Classe d'isolation Isolationsklasse Insulation class	<b>B 130 °C</b>
Protection Schutzart Protection	<b>DIN 40050 IP 30</b>
Tension d'essai Prüfspannung Test voltage	<b>500 VAC</b>
Couple résiduel Restmoment Detent torque	<b>13 mNm</b>

**Caractéristiques dynamiques**  
**Dynamische Daten**  
**Dynamic characteristics**



**Caractéristiques statiques**  
**Statische Daten**  
**Static characteristics**



Possibilités d'exécutions adaptées sur demande.

Auf Wunsch werden kundenspezifische Anforderungen berücksichtigt.

Special requirements can be made to customer specification.

**SONCEBOZ SA**

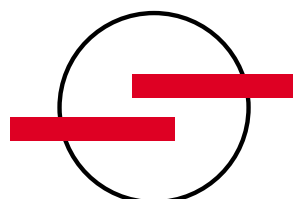
CH-2605 Sonceboz

Tél: +41 32 488 11 11

Fax: +41 32 488 11 00

E-Mail: [info@sonceboz.com](mailto:info@sonceboz.com)

Internet: [www.sonceboz.com](http://www.sonceboz.com)



**SONCEBOZ**

The driving force