

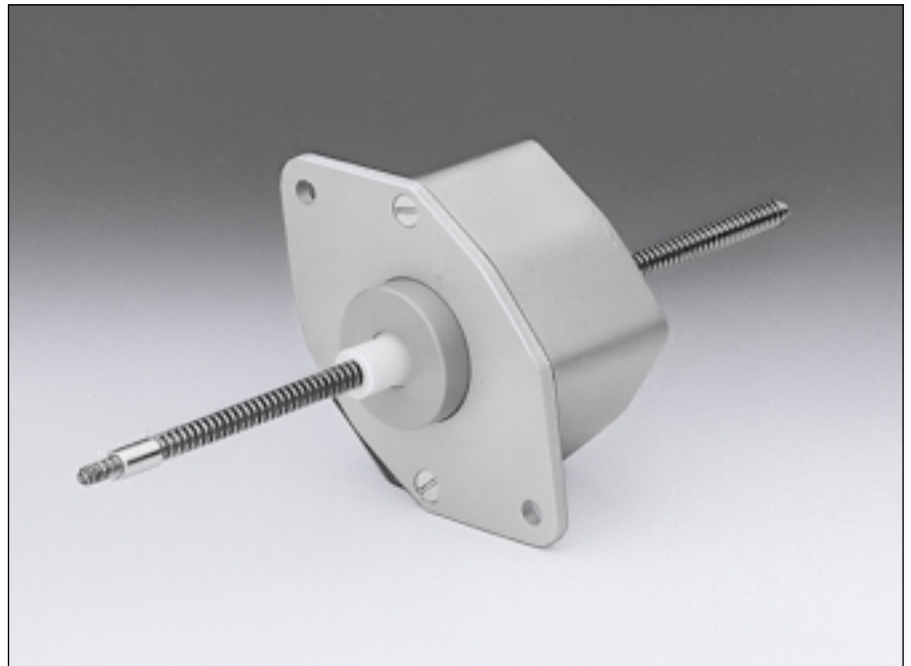
7220

Incrément/pas 0.0254/
Inkrement/Schritt 0.0508 mm
Increment/step 0.001/0.002"

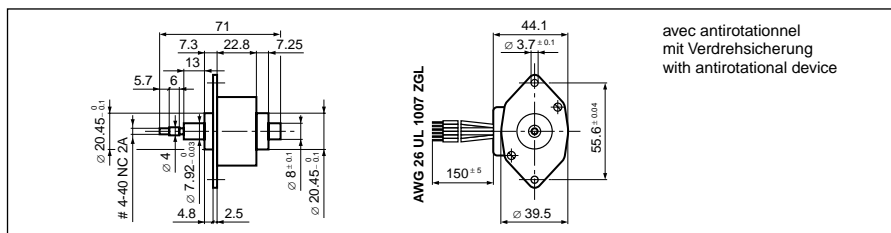
Diamètre
Durchmesser 39 x 39 mm
Diameter

Poids
Gewicht 135 g
Weight

Force max.
Max. Kraft 35 N (0.001")
Max. force 24 N (0.002")

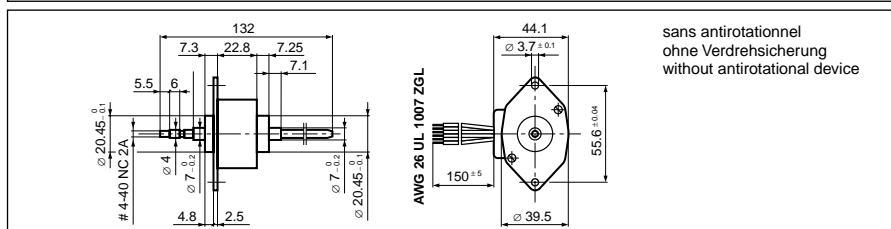


		Résistance de phase Phasenwiderstand Phase resistance	Induct. de phase Phaseninduktivität Phase inductance	Courant de phase Phasenstrom Phase current	Force max. Max. Kraft Max. force	Puissance nominale Nennleistung Nominal power	Code câble Kabelcode Cable-code	
		Ω	mH	A	N	W		
unipolar	7220-4-10 (0.001")	10	6.5	0.5	35	5	vert 1 grün green	
	7220-4-10 (0.002")	10	6.5	0.5	24	5	bleu 2 blau blue	
	7220-4-58 (0.001")	58	43.2	0.2	35	5	brun 3 braun brown	
	7220-4-58 (0.002")	58	43.2	0.2	23	5	blanc/brun 1 weiss/braun white/brown bleu 2 blau blue jaune 3 gelb yellow	



Course max.
avec antirotationnel
Maximaler Weg mit
Verderhsicherung
Max. travel length with
antirotational device

22.2 mm



Course max.
sans antirotationnel
Maximaler Weg ohne
Verderhsicherung
Max. travel length without
antirotational device

63.5 mm

Classe d'isolation
Isolationsklasse
Insulation class

E 120 °C

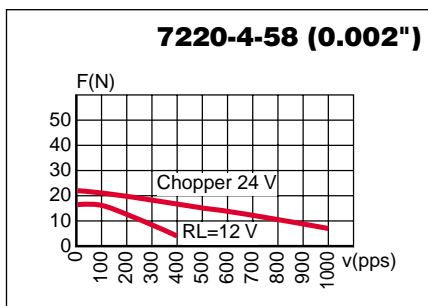
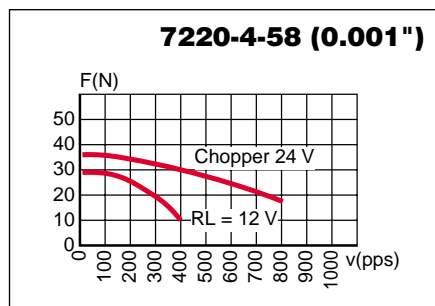
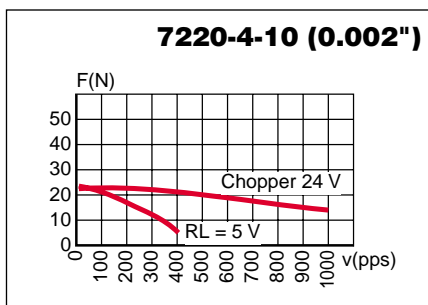
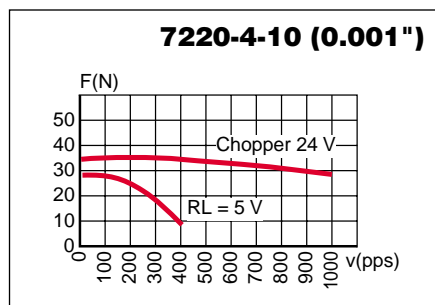
Protection
Schutzart
Protection

**DIN 40050
IP 30**

Tension d'essai
Prüfspannung
Test voltage

500 VAC

Caractéristiques dynamiques
Dynamische Daten
Dynamic characteristics



Possibilités d'exécutions adaptées sur demande.

Auf Wunsch werden kundenspezifische Anforderungen berücksichtigt.

Special requirements can be made to customer specification.

SONCEBOZ SA

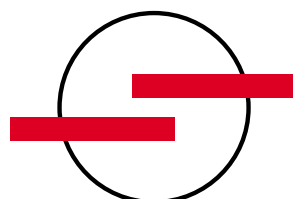
CH-2605 Sonceboz

Tél: +41 32 488 11 11

Fax: +41 32 488 11 00

E-Mail: info@sonceboz.com

Internet: www.sonceboz.com



SONCEBOZ

The driving force